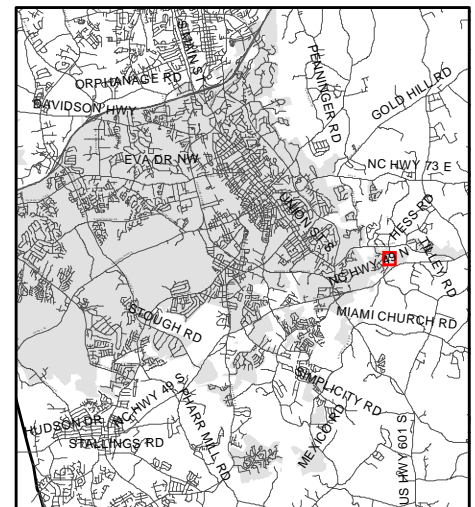
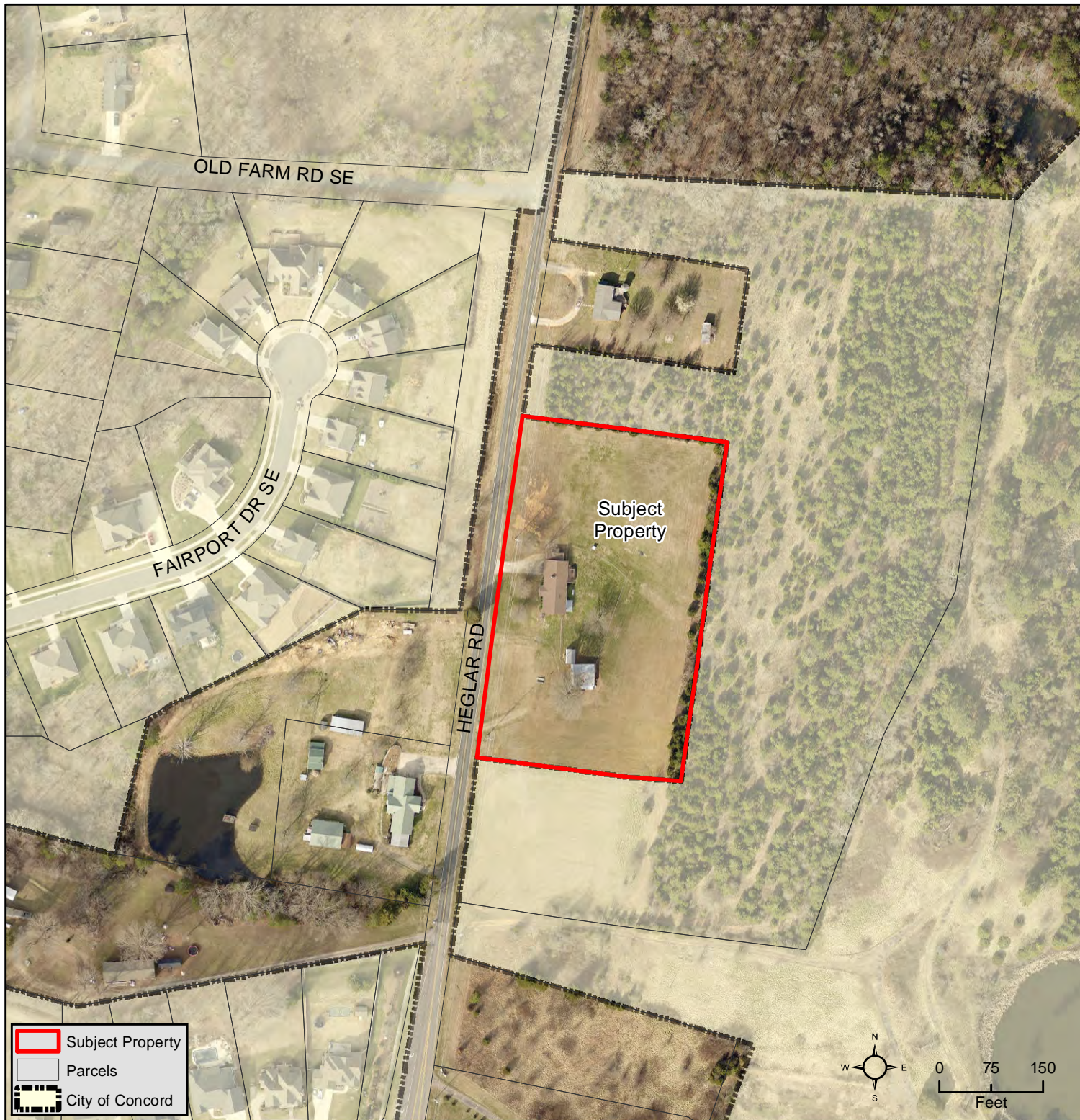


**Z-12-21
Aerial**

**Proposed Zoning Amendment
Cabarrus County LDR
(Low Density Residential)
to Concord RM-1
(Residential Medium Density)**

2183 Heglar Rd
PIN: 5549-49-9161



Source: City of Concord
Planning Department

Disclaimer

These maps and products are designed for general reference only and data contained herein is subject to change. The City Of Concord, it's employees or agents make no warranty of merchantability or fitness for any purpose, expressed or implied, and assume no legal responsibility for the information contained therein. Data used is from multiple sources with various scales and accuracy. Additional research such as field surveys may be necessary to determine actual conditions.